

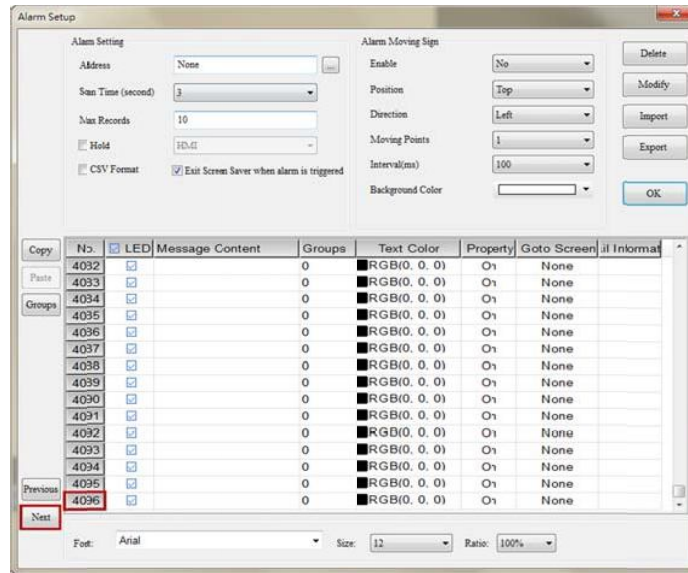
3.2 Advanced alarm function

Followings are the descriptions of advanced alarm function.

■ DOP-B / DOP-H / HMC Series

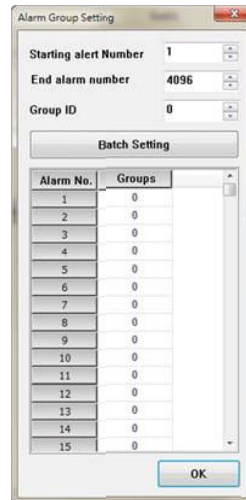
The alarm number is increased to 4096.

- Users can switch to alarm number 2049 ~ 4096 by clicking on the [Next] button.
- Users can switch to alarm number 1 ~ 2048 by clicking on the [Previous] button.



Alarm Group Setting

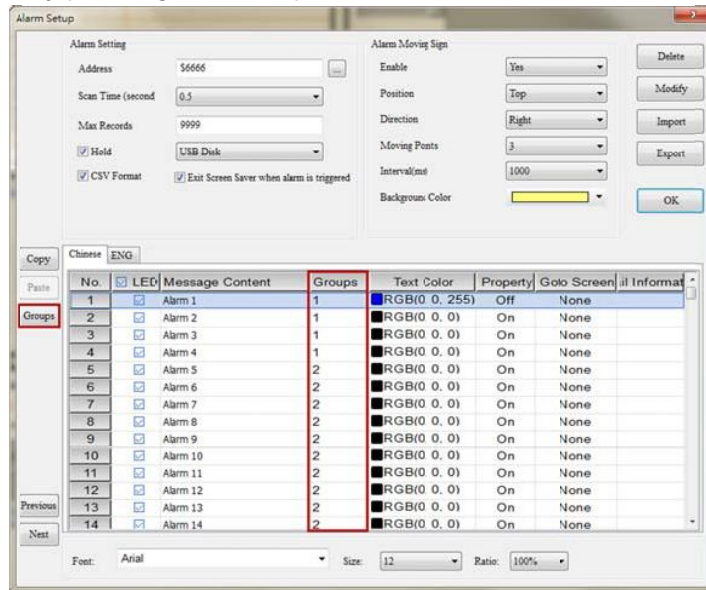
- For easy search and browse, users can specify the displaying alarm information that is classified in one group.
- The [Groups] button enables users to set the group number.
- Range for setting the group number is from 0 to 4095.



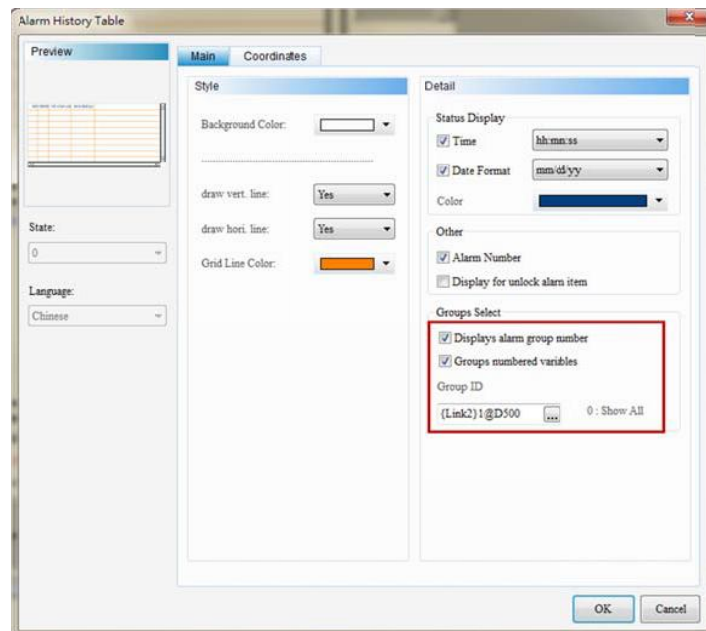
- Alarm History Table, Active Alarm List, Alarm Frequency Table and Alarm Moving Sign all allow users to [specify group number variable in order to display the group number](#). When the variable is 0, the screen will display all alarms; when the variable is 1, the screen will only display the alarm number in group 1.

Here we take DOP-B10E615 as the example for further descriptions.

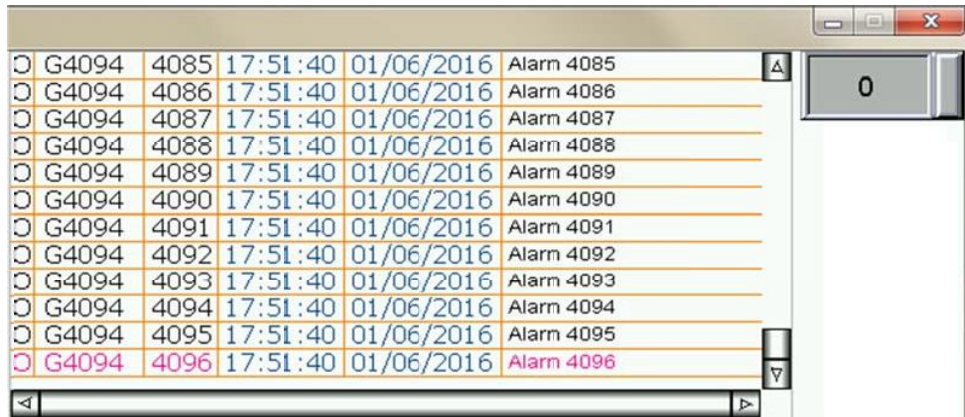
Step 1: Create the alarm screen and view all alarms. Users can set the group number in batch from alarm number 1 to 4096 by pressing the [Groups] button.



Step 2: Create the Alarm History Table. Check [Display alarm group number] and [Groups numbered variables]. Then set the group ID to D500. Create one numeric entry element and set its address to D500.

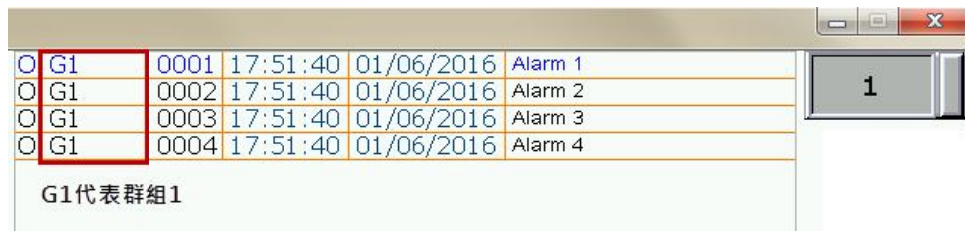


Step 3: After downloading the screen to the HMI, trigger the button of ALL ON. If D500 is set to 0, it will display the alarm number from 1 to 4096.



G4094	4085	17:51:40	01/06/2016	Alarm 4085
G4094	4086	17:51:40	01/06/2016	Alarm 4086
G4094	4087	17:51:40	01/06/2016	Alarm 4087
G4094	4088	17:51:40	01/06/2016	Alarm 4088
G4094	4089	17:51:40	01/06/2016	Alarm 4089
G4094	4090	17:51:40	01/06/2016	Alarm 4090
G4094	4091	17:51:40	01/06/2016	Alarm 4091
G4094	4092	17:51:40	01/06/2016	Alarm 4092
G4094	4093	17:51:40	01/06/2016	Alarm 4093
G4094	4094	17:51:40	01/06/2016	Alarm 4094
G4094	4095	17:51:40	01/06/2016	Alarm 4095
G4094	4096	17:51:40	01/06/2016	Alarm 4096

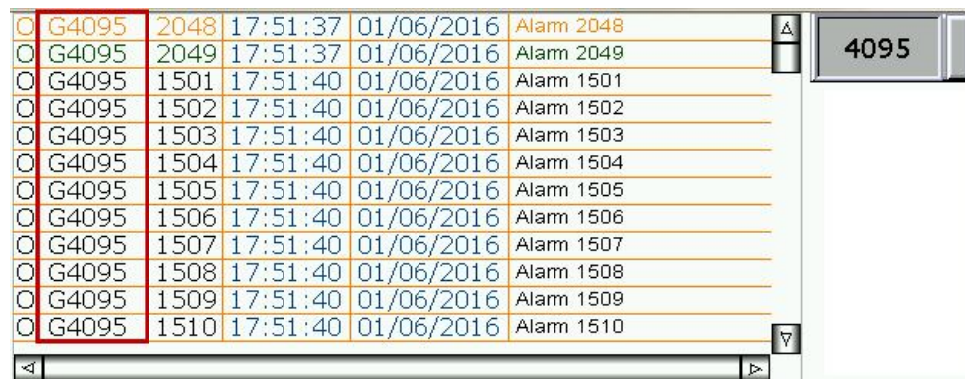
If D500 is set to 1, it only displays the alarm number in group G1.



G1	0001	17:51:40	01/06/2016	Alarm 1
G1	0002	17:51:40	01/06/2016	Alarm 2
G1	0003	17:51:40	01/06/2016	Alarm 3
G1	0004	17:51:40	01/06/2016	Alarm 4

G1代表群組1

If D500 is set to 4095, it only displays the alarm number in group G4095.



G4095	2048	17:51:37	01/06/2016	Alarm 2048
G4095	2049	17:51:37	01/06/2016	Alarm 2049
G4095	1501	17:51:40	01/06/2016	Alarm 1501
G4095	1502	17:51:40	01/06/2016	Alarm 1502
G4095	1503	17:51:40	01/06/2016	Alarm 1503
G4095	1504	17:51:40	01/06/2016	Alarm 1504
G4095	1505	17:51:40	01/06/2016	Alarm 1505
G4095	1506	17:51:40	01/06/2016	Alarm 1506
G4095	1507	17:51:40	01/06/2016	Alarm 1507
G4095	1508	17:51:40	01/06/2016	Alarm 1508
G4095	1509	17:51:40	01/06/2016	Alarm 1509
G4095	1510	17:51:40	01/06/2016	Alarm 1510

Other elements such as Active Alarm List, Alarm Frequency Table and Alarm Moving Sign apply the same method to display the group number.